

Product portfolio

Aurora Vision offers a comprehensive range of software products for image analysis

Studio

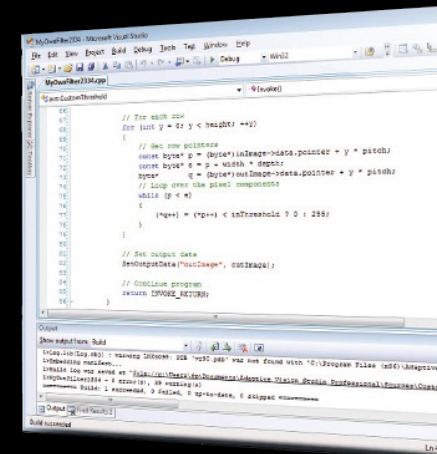
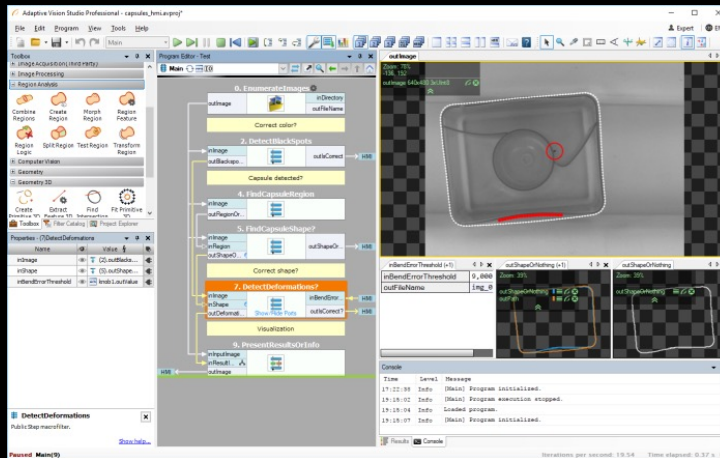
Graphical, dataflow-based environment for rapid development

Library

For C++ and .NET

Deep Learning

Sample-based training



Designed for the needs of machine vision engineers. Highly powerful and intuitive at the same time.

A set of ready-to-use functions for C++ and .NET programming. Simple, modern and highly optimized for multi-threaded execution.

A set of seven ready-made tools based on deep learning technology.

No programming skills are required.

Value Proposition

Why Zebra Aurora Vision?

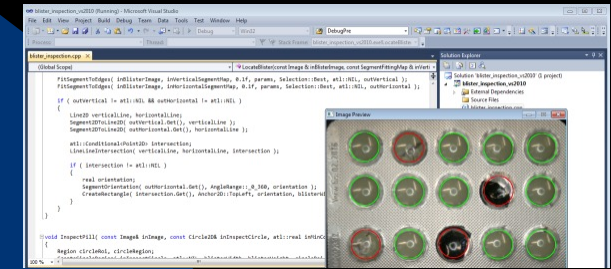
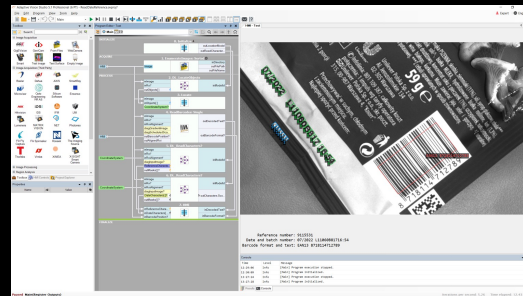
- Rapid development – significantly faster compared to low-level programming
- Easy-to-use, graphical programming environment
- But still so powerful - over 3000 reliable, field-tested tools optimized for demanding applications
- Mature solution – all tools have been implemented and developed for the last 16 years
- Hardware-agnostic – support for most cameras available on the market as well as 3D scanners
- Available for multiple platforms

GiG
VISION



All-in-one development platform

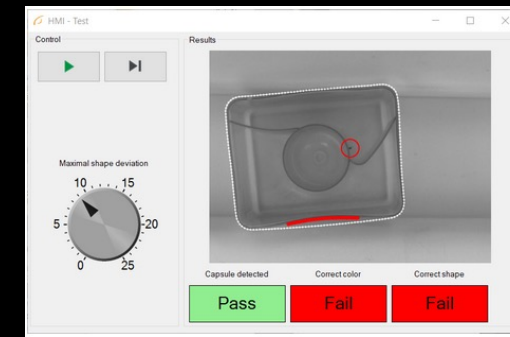
Reduce your time to market by taking advantage of user-friendly and hardware-agnostic software



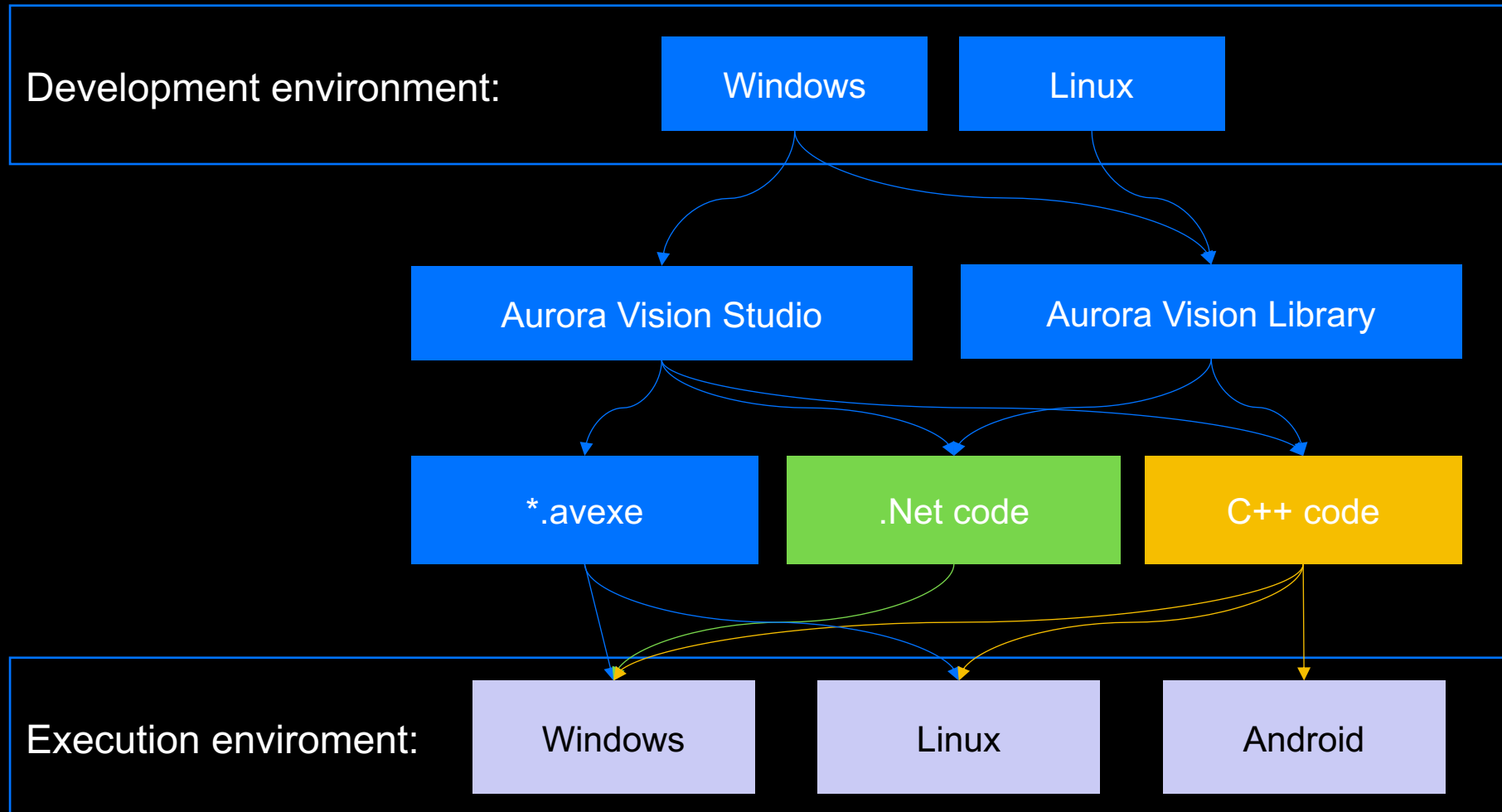
Generate code or design user interface

Develop an algorithm or train AI-based tools

Select hardware

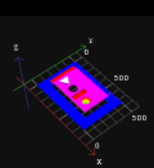
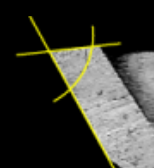
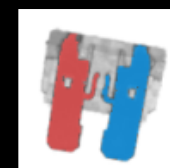
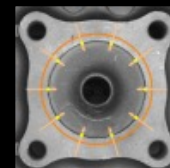
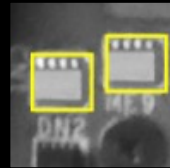
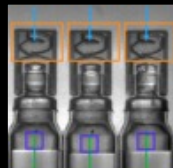
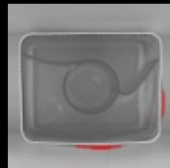
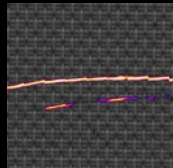
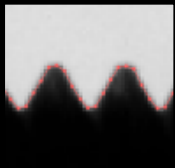
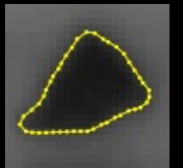
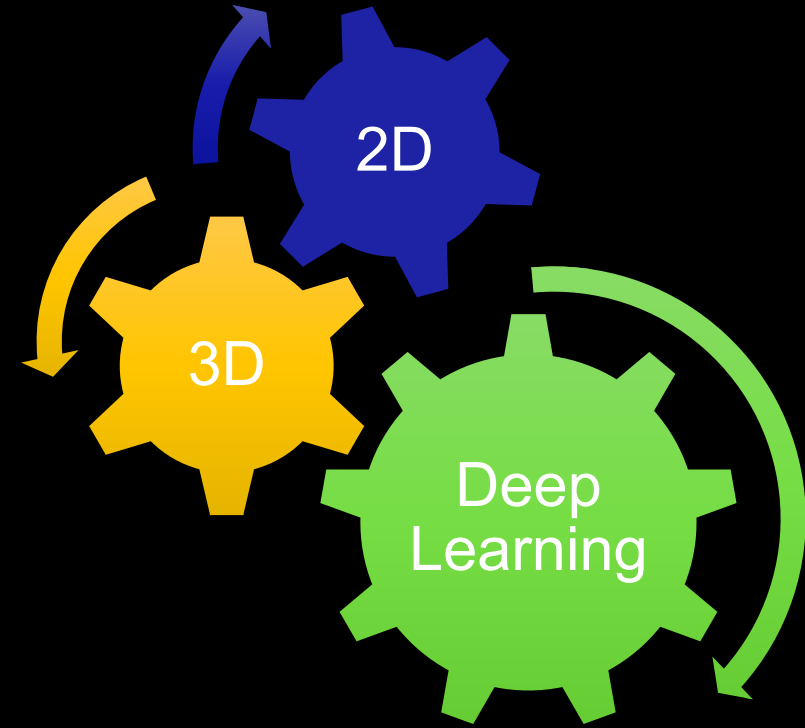


Multiple platforms supported



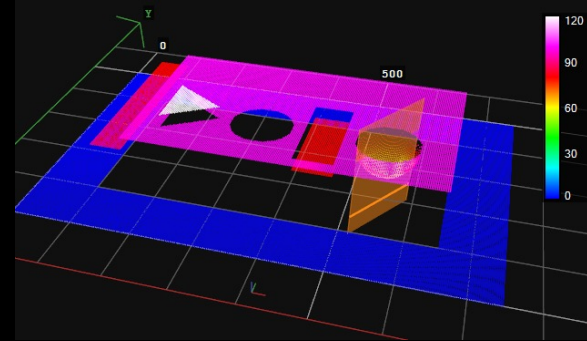
Multiple technologies in one environment

- Traditional 2D inspections
- Tools to analyse 3D data
- Powerful deep learning algorithms
- All those technologies can be easily connected to work together

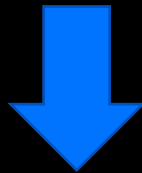
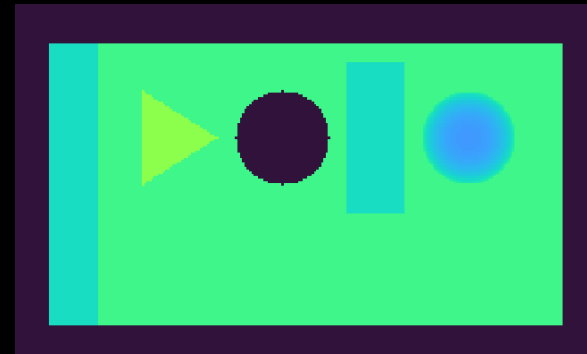


Different data types
can be easily
converted and used
interchangeably

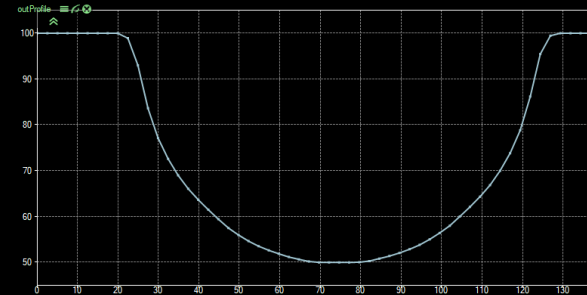
3D



2D

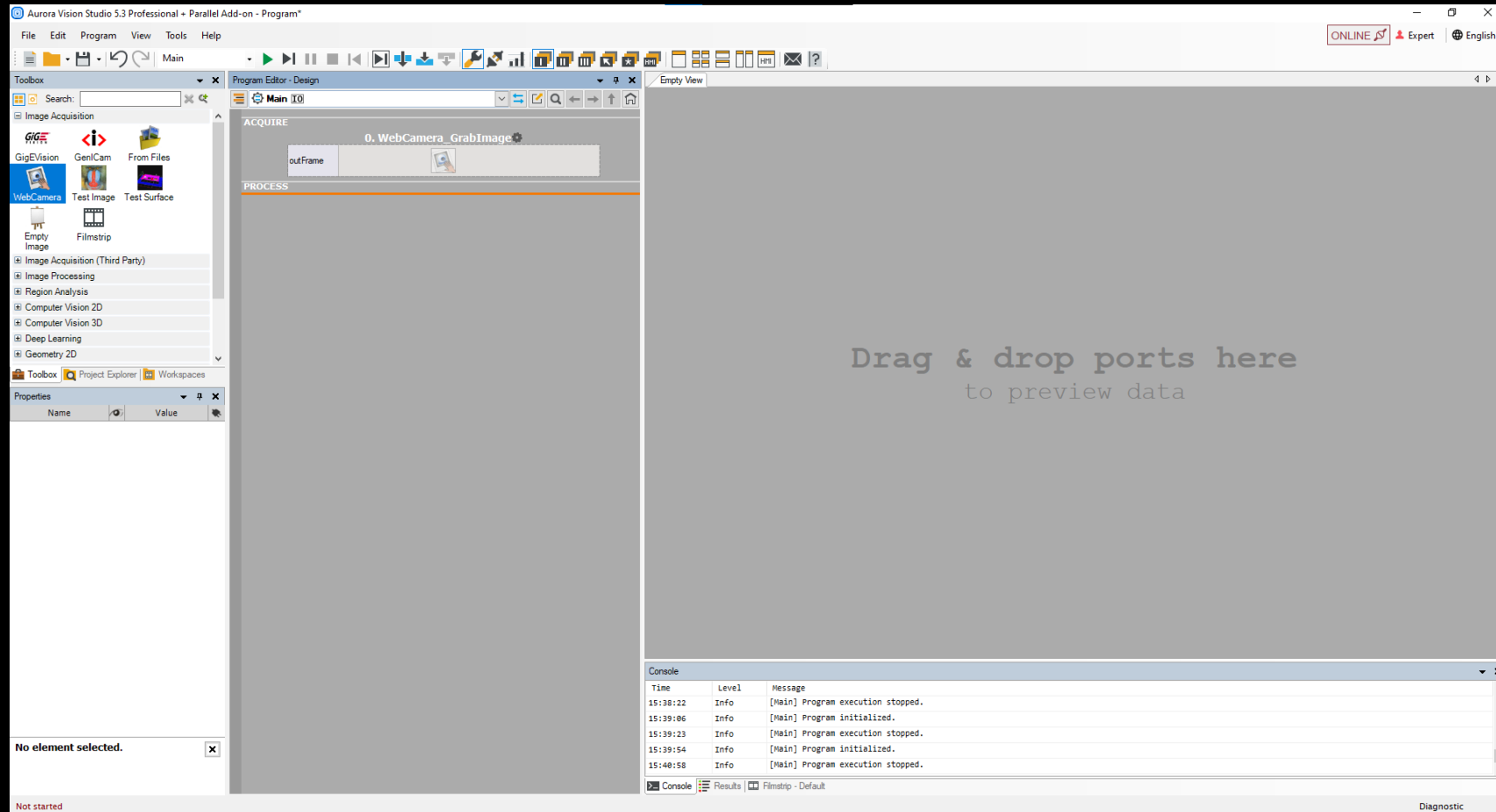


1D



Aurora Vision Studio

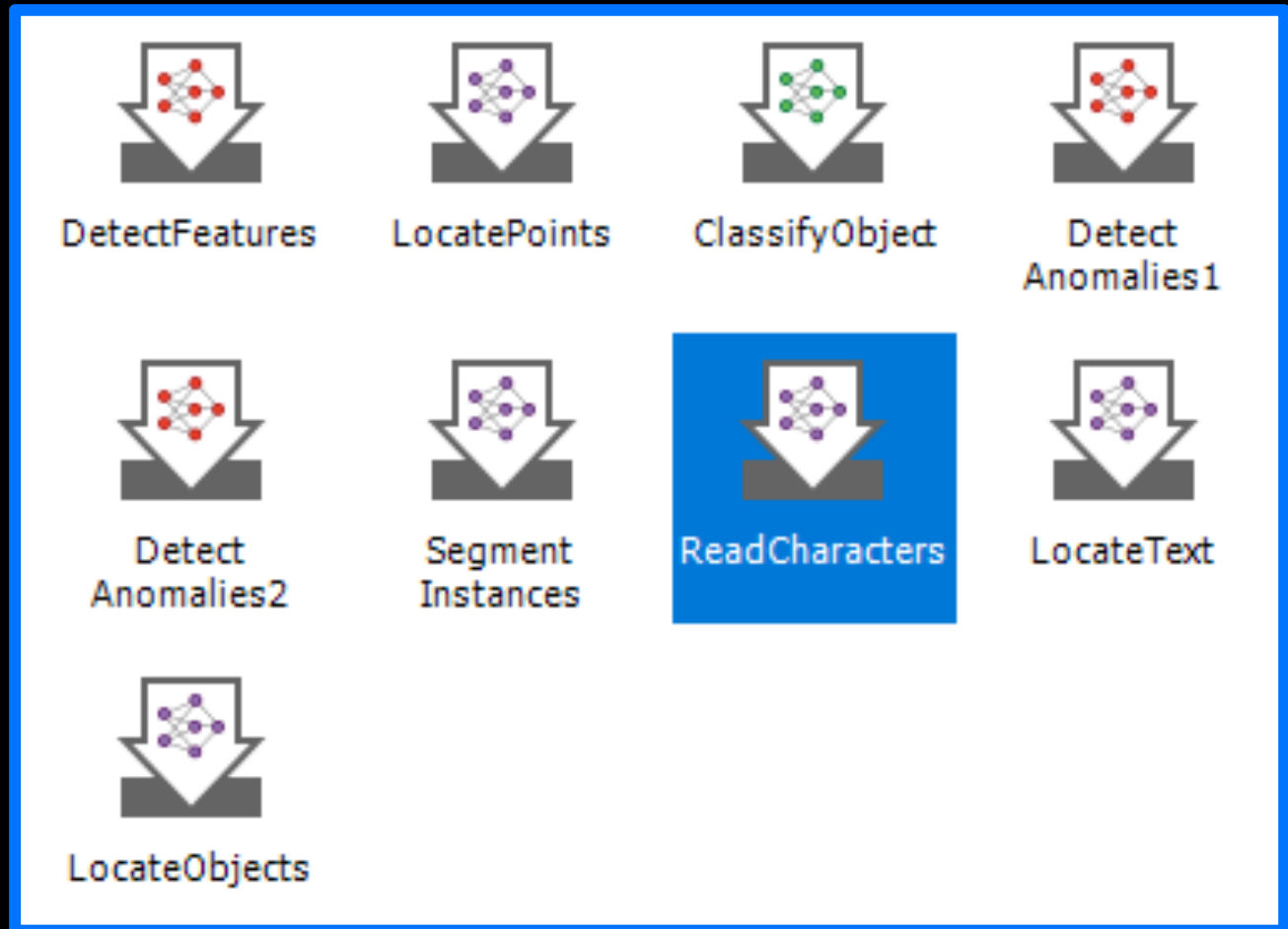
Overview – hands on



Deep Learning

Available Deep Learning tools:

- Detect Features
- Locate Points
- Classify Object
- Detect Anomalies
- Segment Instances
- Locate Objects
- Locate Text
- Read Characters



Detect Features

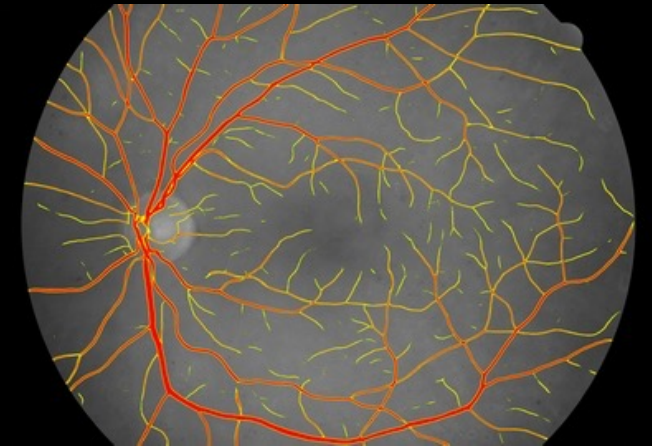
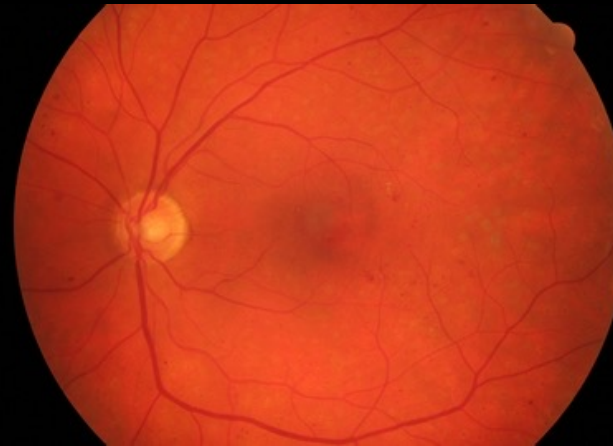
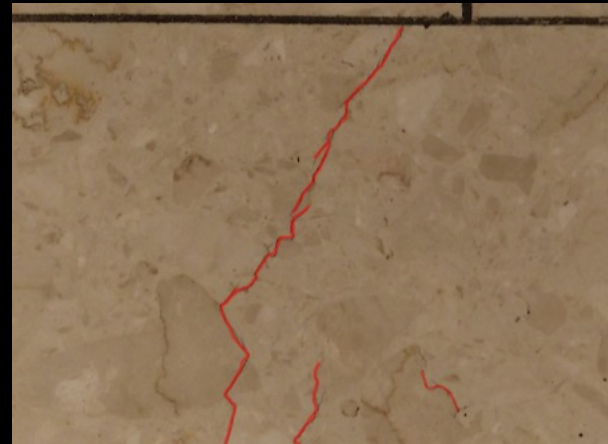
Feature Detection

Also known as *supervised* defect detection.

The user carefully marks pixels corresponding to defects on the training images. The tool then learns to distinguish defects or other specific features by looking for their key characteristics automatically extracted with convolutional layers of the neural network that works under the hood.

Key features:

- Very good accuracy
- Laborious labelling process



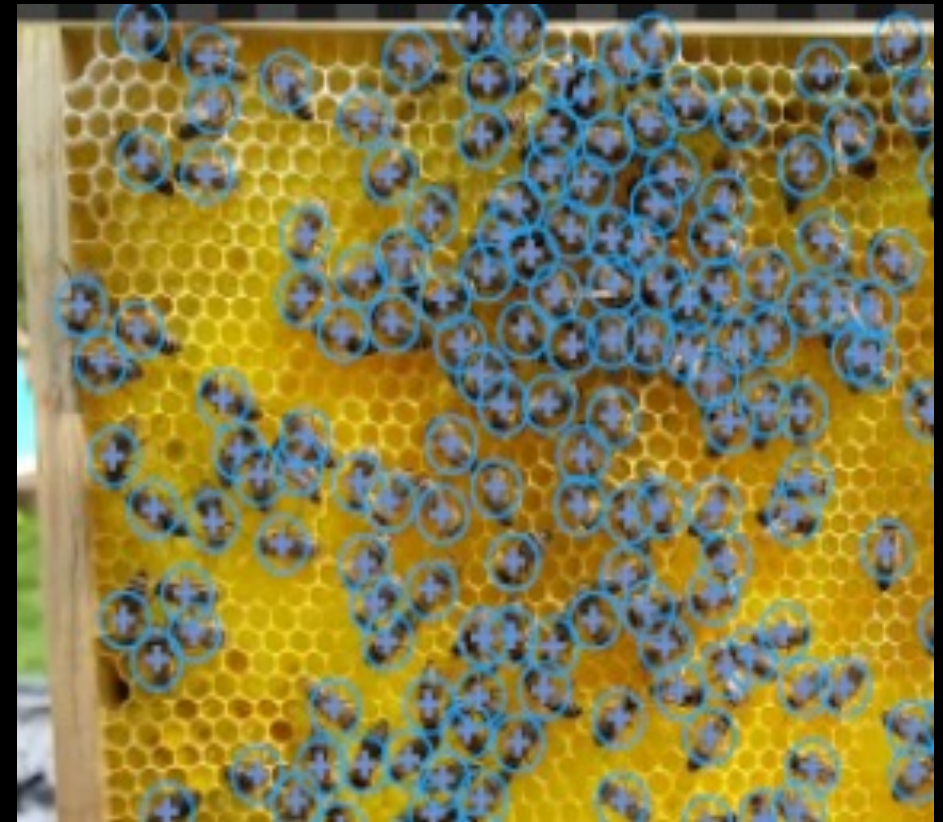
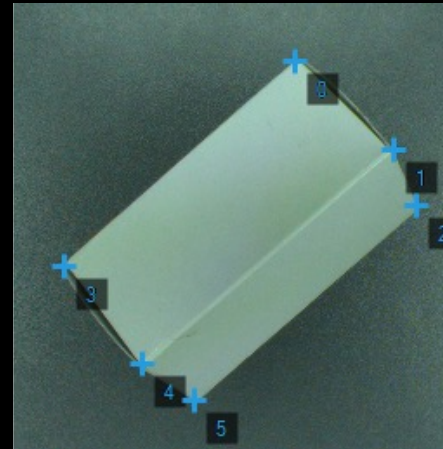
Locate Points

Point Location

Quick and easy object detection tool that looks for characteristic points on the input image.

Key features:

- Data labeling is easy (one click per object)
- Detects a point, not a region
- Relatively fast execution



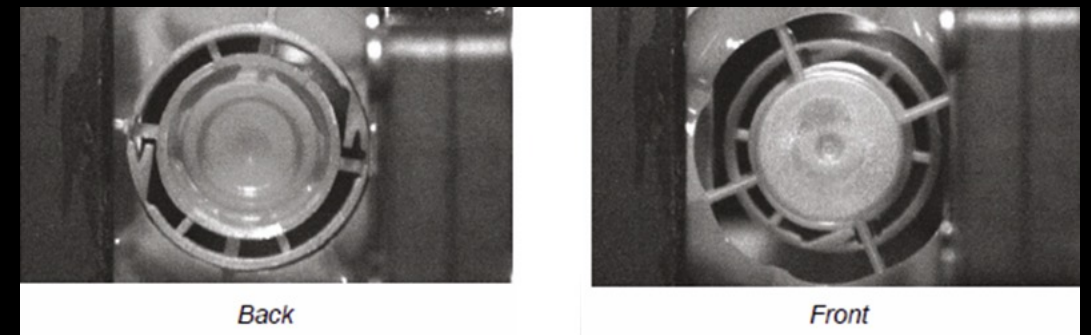
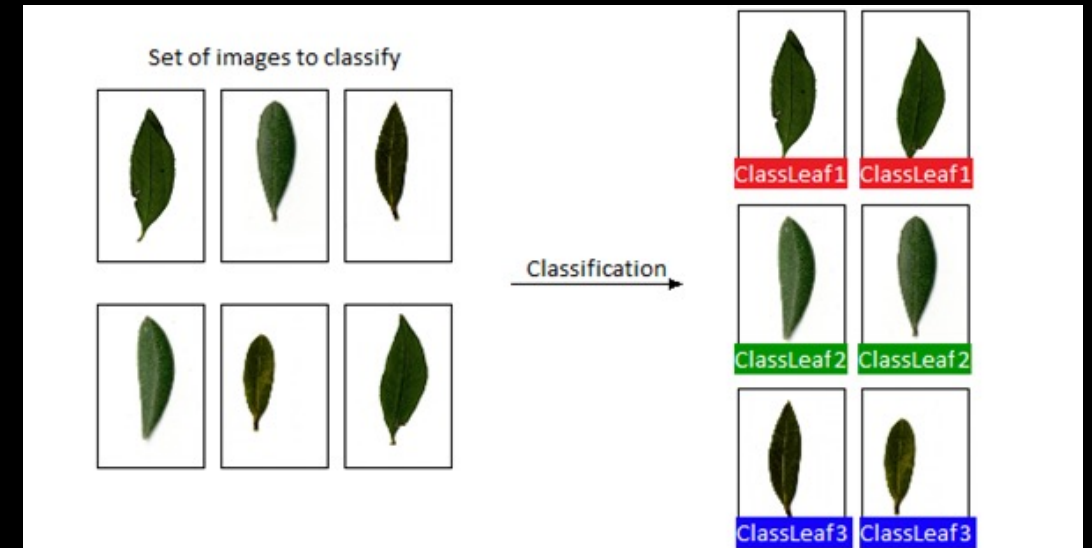
Classify Object

Object Classification

Whole image classification is the most basic deep learning tool. The tool analyzes an entire image and provides a name for the most prominent object in the scene.

Key features:

- Simple and very easy to use
- Separates up to 50 object classes in industrial applications effectively



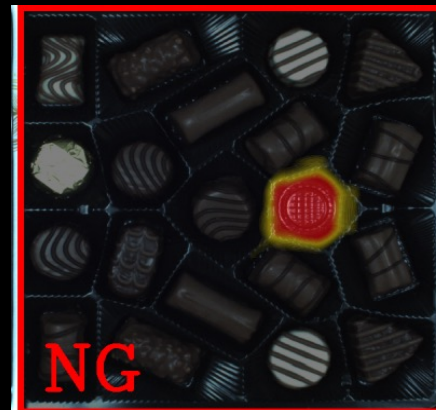
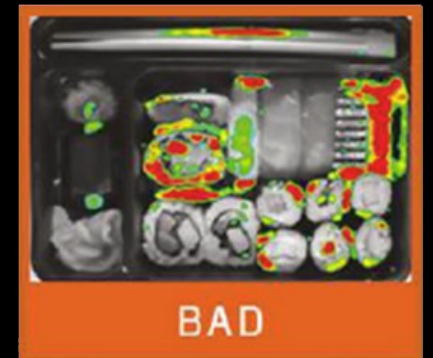
Detect Anomalies

Anomaly Detection

In Anomaly Detection there is no specific definition of a defect—the tool is trained with Good samples and then looks for deviations of any kind. From the machine learning point of view it is a more difficult task as the neural network is not able to infer knowledge from sample defects.

Key features:

- Very easy to use
- Users do not need to provide definitions of defects
- Detects any unexpected product deviations



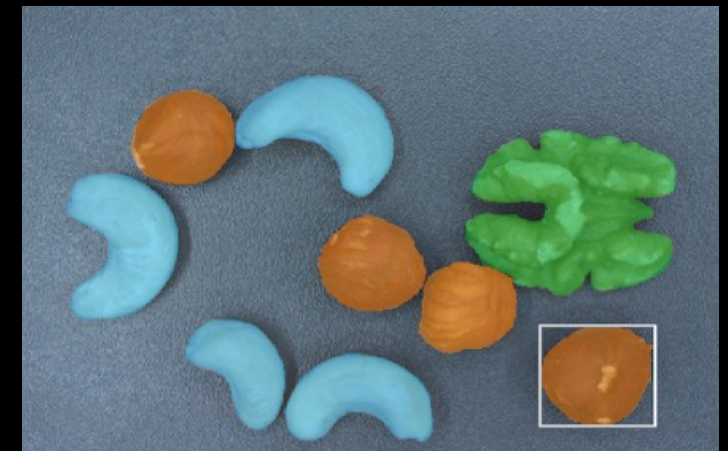
Segment Instances

Instance Segmentation

This tool simultaneously detects and classifies several objects on the input image. And it is not only a bounding rectangle of an object that is detected but a complete mask which then can be used for further processing.

Key features:

- Laborious labeling process
- Robust against touching and intersecting objects
- Highly effective for a wide variety of object types



Locate Objects

Object location

This tool is used to locate and classify one or multiple objects within an image. The result of this technique is a list of rectangles bounding the predicted objects with corresponding class predictions and confidence scores.

Key features:

- Allows to train multiple classes
- Provides object location and orientation



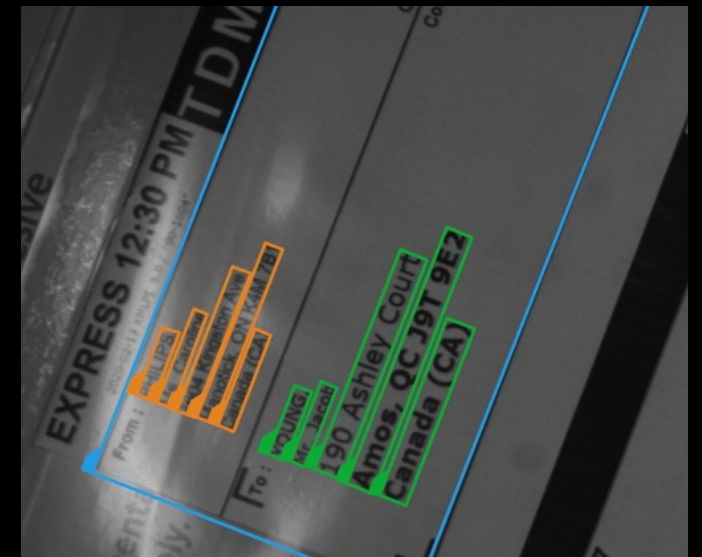
Locate Text

Text location

This tool is used to locate text on images. The result is a list of rectangles bounding text characters. Often used to detect character orientation before reading the actual writing.

Key features:

- Pre-trained, ready-to-use without any training
- A good starting point for OCR algorithms



Read Characters

Character identification

This tool is used to locate individual characters and detect appropriate symbols.

Key features:

- Pre-trained, ready to use without any training
- Extremely robust



Complex backgrounds



Blurred text



Reflective surfaces

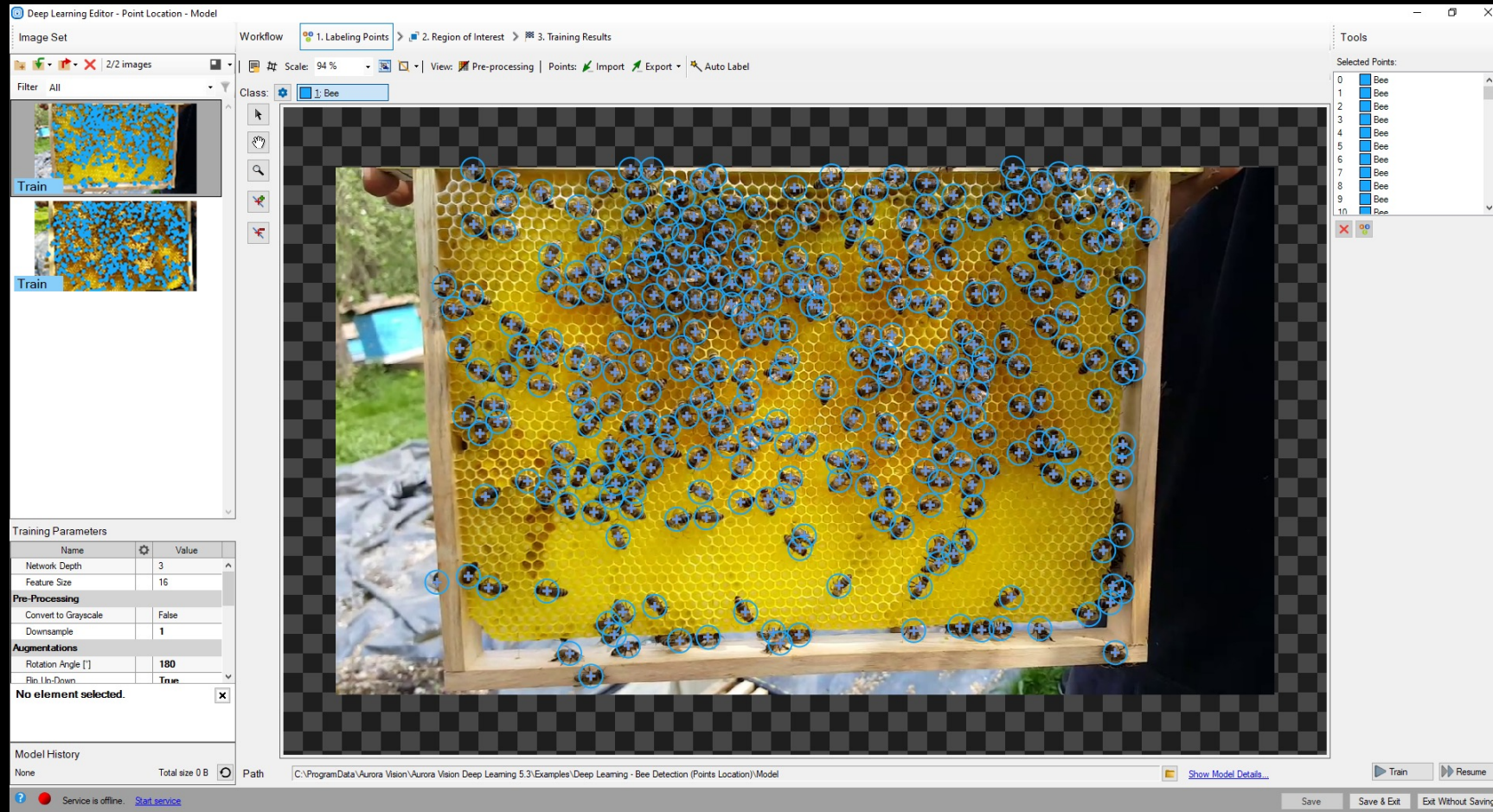


Low quality prints



Aurora Vision Studio

Deep learning – hands on overview



Zebra DevCon 2023



Thank You

ZEBRA and the stylized Zebra head are trademarks of Zebra Technologies Corp., registered in many jurisdictions worldwide. All other trademarks are the property of their respective owners.
©2023 Zebra Technologies Corp. and/or its affiliates. All rights reserved.