



ET51 & ET56 Android and Windows 10

Configuration & Accessories Guide

Designed to assist customers and partners
with model and configuration guidance



Oct 2023

ET51 & ET56 Tablet Configuration Matrix

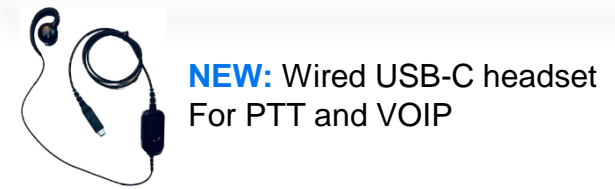
Configuration Matrix

ET5	1		A		E		W		1		2		E		(Blank if not used)		(Blank if not used)		← Combined Sample SKU for this Description	
	Radios		Modem / Region		Display		Operating System		Processor		Memory (GB) (RAM / FLASH)		Localization		Custom Feature		Country or Region		8 in, WLAN, Win10, E3940, 4GB/64GB, WW	
1	WLAN Only	A	WLAN Only Intel - WW	E	8.4 in.	W	Windows 10 IoT	1	Intel E3940	1	4 / 32	E	English	00	None	Blank	Worldwide			
6	WLAN & WWAN	B	WLAN & WWAN Intel / Telit - WW	T	10.1 in.	G	Android GMS	2	QC SD660	2	4 / 64	F	French	DT	Disabled Features	NA	US / CAN / PR			
		C	WLAN Only Qualcomm - WW			L	Android Non-GMS			3	4 / 128	I	Italian	FT	TAA / FIPS Compliant	A6	RoW			
		D	WLAN & WWAN Qualcomm - NA							4	8 / 64	G	German	MT	Mounted Tablet	CN	China			
		E	WLAN & WWAN Qualcomm - RoW (10" Form Factor)							5	8 / 128	S	Spanish	SF	Integrated Scanner	EA	EEA countries			
												M	Chinese Simplified			IA	India			
												C	Chinese Traditional							
												P	Brazilian & Portuguese							
												H	Hebrew							
												J	Japanese							
												SW	Swedish							
												K	Korean							
												R	Russian							

Examples														Part Number				Description			
ET5	6		B	T	-	W		1		2		E	-			ET56BT-W12E	10 in, WWAN, Win10, E3940, 4GB / 64GB, WW				
ET5	1		C	T	-	G		2		1		E	-	00	NA	ET51CT-G21E-00NA	10 in, WLAN, And GMS, SD660, NA				
ET5	6		D	E	-	G		2		1		E	-	00	A6	ET56DE-G21E-00A6	8 in, WWAN, And GMS, SD660, RoW				
ET5	1		C	E	-	L		2		1		E	-	00	CN	ET51CE-L21E-00CN	8 IN, WLAN, And non-GMS, SD660, China				
ET5	1		A	E	-	W		1		5		E	-	SF		ET51AE-W15E-SF	8 in, WLAN, Win10, 8/128, Integrated Scanner, WW				
ET5	1		C	E	-	G		2		1		E	-	SF	A6	ET51CE-G21E-SFA6	8 in, WLAN, And GMS, 4/32, Integrated Scanner, RoW				
ET5	1		C	E	-	G		2		1		E	-	SF	NA	ET51CE-G21E-SFNA	8 in, WLAN, And GMS, 4/32, Integrated Scanner, NA				

ET51 & ET56 Accessory Ecosystem

Accessory Ecosystem Overview



Passive Stylus

Charging Cradles and Docks with Communication Ports



USB Power Supply & Cable



PWR-WUA5V12W0xx
USB Power Supply



CBL-TC2X-USBC-01
USB-A to USB-C cable



- USB Power Supply and USB-C Cable combination approved for use with ET51 / ET56 tablets and ET51 with Integrated Scanner devices.
- Attaches to USB-C side port (tablet) or covered port (integrated scanners).
- Consumer grade connector, price, and durability.
- PWR-WUA5V12W0xx: 5V, 2.5 Amp (12.5W) AC to USB-A
- Approximate charge time (8 in. device): 3 hours from 0 to 90% capacity
- **Note:** Power Supply (PWR-WUA5V12W0xx) and USB-C Cable (CBL-TC2X-USBC-01) are each **Sold Separately**
- **Note:** All regional power supplies (PWR-WUA5V12W0xx) are qualified for use with ET5x tablets; where, **xx** represents:
 - **AR**, Argentina; **AU**, Australia; **BR**, Brazil; **CN**, China; **EU**, EU Countries;
 - **GB**, Hong Kong, Ireland, UK, & others; **IN**, India; **KR**, Korea; **US**, United States

Charge Only 1-Slot Dock



CRD-ET5X-1SCG2
ET5X 1-Slot Charge Only Dock



- Supports charging for **all** ET5x tablets
- Accepts tablets with or without **Integrated Scanners**
- Accepts tablets with or without **Expansion Backs or Rugged Frames**
- Auxiliary PowerPack also charges while inserted in an Expansion Back
- **Note:** Requires Power Supply (PWR-BGA12V50W0WW), DC Line Cord (CBL-DC-388A1-01), and country specific AC Line Cord (e.g. 23844-00-00R); **Sold Separately**



Charging Cradles and Docks with Communication Ports



Charge & Communication 1-Slot Dock

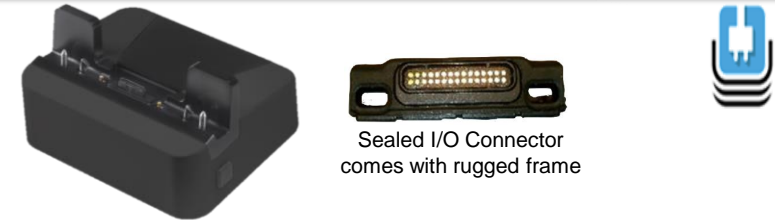


CRD-ET5X-1SCOM1
ET5X 1-Slot Charge and Communication Dock

- Charges and extends I/O for: HDMI, Ethernet & 3 USB ports
- Accepts tablets with or without **Expansion Backs**
- Auxiliary PowerPack also charges while inserted in an Expansion Back
- Accepts tablets with or without **Rugged Frames**
 - **Does not support Rugged I/O connectors that can be optionally implemented with the Rugged Frames**
- **Does not accept** tablets with **Integrated Scanners**
- **Note:** Requires Power Supply (PWR-BGA12V50W0WW), DC Line Cord (CBL-DC-388A1-01), and country specific AC Line Cord (e.g. 23844-00-00R); **Sold Separately**



Rugged Charge & Comms 1-Slot Dock



CRD-ET5X-1SCOM2R
1-Slot Dock with Rugged IO Adapter

- Charges & extends tablets equipped with a Rugged I/O Connector for HDMI, Ethernet, and 3 USB Ports
- Accepts tablets with or without **Integrated Scanners**
- Accepts tablets with or without **Expansion Backs**
- Auxiliary PowerPack also charges while inserted in an Expansion Back
- **Note:** This cradle requires Rugged I/O Connector, **SG-ET5X-RGIO2-01**. If the tablet / rugged frame combination does not charge, the existing Rugged I/O Connector must be replaced. This situation will occur with Rugged Frames & Connectors sold prior to December 2018.
- **Note:** Requires Power Supply (PWR-BGA12V50W0WW), DC Line Cord (CBL-DC-388A1-01), and country specific AC Line Cord (e.g. 23844-00-00R); **Sold Separately**



Rugged Charging Docks, Cable Chargers, and I/O Connectors



Rugged Charge Connector



CHG-ET5X-CBL2-01
Rugged Charge Connector

- Rugged charge cable breaks away to prevent tablet damage
- DC barrel input on the side
- Works on tablets with or without Rugged Frames
- This connector is **not compatible** with **ET51 with Integrated Scanner models**
- **Note:** Requires Power Supply (PWR-BGA12V50W0WW), DC Line Cord (CBL-DC-388A1-01), and country specific AC Line Cord (e.g. 23844-00-00R); **Sold Separately**



Rugged Charging Adaptors



SG-ET5X-RGIO2-01
Replacement Rugged I/O Connector

- Replacement I/O connector for Rugged Frames
- This part is included when ordering a new Rugged Frame
 - SG-ET5X-8RCSE2-02, SG-ET5X-10RCSE2-01
- This connector is compatible with **all** charging cradles and docks except the non-Rugged ET5X 1-Slot Charge and Communication Dock (CRD-ET5X-1SCOM1).
- **Note:** If a new dock is purchased and the tablet / rugged frame combination does not charge in it, most likely the existing rugged I/O connector needs to be replaced with this new version. This situation will occur with Rugged Frames & Connectors sold prior to December 2018.

ShareCradle System



4-Slot ShareCradle



CRD-ET5X-SE4CO2-01
ET5X 4-Slot Charge Only Cradle

- ShareCradle System for use with ET51/ET56 8- and 10-inch tablets.
- ShareCradle System uses ET5x Terminal & Spare Battery Cups designed to be shared across the Zebra suite of Charge Only bases.
- Option to mount a 4-Slot PowerPack Charger (**SAC-ET5X-4PPK1-01**)
- Fits on a tabletop, wall mounted, or rack mounted (requires 19 in. rack mounting accessory **BRKT-SCRD-SMRK-01** ***sold separately***)
- Accepts tablets with or without **Expansion Backs or Rugged Frames**
- Not recommended for use with ET51 Integrated Scanning devices (see **CRD-ET5X-SE4CO3-01**)
- **Note:** ShareCradles require Power Supply (PWR-BGA12V**108**W0WW), DC Line Cord (CBL-DC-38**2**A1-01), and country specific AC Line Cord (e.g. 23844-00-00R); **Sold Separately**



With Cups for Integrated Scanner



CRD-ET5X-SE4CO3-01
4-Slot Charge Only ShareCradle for ALL ET5X Tablets
(with or without Integrated Scanner)

- ShareCradle System for use with ET51/ET56 8- and 10-inch tablets, **and ET51 8 in. tablets with integrated scanner.**
- ShareCradle System uses ET5x Terminal & Spare Battery Cups designed to be shared across the Zebra suite of Charge Only bases.
- Option to mount a 4-Slot PowerPack Charger (**SAC-ET5X-4PPK1-01**)
- Fits on a tabletop, wall mounted, or rack mounted (requires 19 in. rack mounting accessory **BRKT-SCRD-SMRK-01** ***sold separately***)
- Accepts tablets with or without **Expansion Backs or Rugged Frames**
- **Note:** ShareCradles require Power Supply (PWR-BGA12V**108**W0WW), DC Line Cord (CBL-DC-38**2**A1-01), and country specific AC Line Cord (e.g. 23844-00-00R); **Sold Separately**



ShareCradle Mounting Option

ShareCradle Mounting Bracket



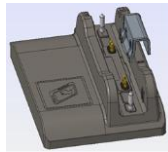
BRKT-SCRD-SMRK-01
Multi-Slot ShareCradle Mounting Bracket

- Allows for rack and wall mounting of all Multi-Slot ShareCradles OR can be used to mount up to four 4-Slot PowerPack Battery Chargers.
- Bracket can be mounted on standard 19" network rack or on a wall.
- Cable routing slots & removable power supply tray.
- Adjustable tabs & screw mounts for easy hanging/installation with ability to support one Multi-Slot ShareCradle or four 4-Slot Battery Chargers and their power supplies.

ShareCradle Cup/Shim Set & PowerPack Charger



4-Slot ShareCradle Cup/Shim Set



CRD-ET5X-SE4CO3-UPGR1-04

4 ShareCradle Cups & Shims to Fit ET5x 8" with Integrated Scanner

- Add this set of cups and shims to previously released ShareCradles to accommodate ET51 tablets with Integrated Scanners.
- This set is not necessary for other ET5x tablets with or without the Rugged Frame
- Provides the perfect fit for an ET51 with Integrated Scanners in CRD-ET5X-SE4CO2-01 ShareCradles
- This set is already supplied with CRD-ET5X-SE4CO3-01. No additional orders are needed for this model.

4-Slot PowerPack Charger



SAC-ET5X-4PPK1-01

ET5X 4-Slot Battery Charger for Optional PowerPack

- Standalone 4-slot charger with charge state indicator LEDs
- Can be docked in 4-slot ShareCradle via adapter cup
 - Requires its own power supply even while docked with ShareCradles
- **Note:** 4-Slot PowerPack Chargers require Power Supply (PWR-BGA12V50W0WW), DC Line Cord (CBL-DC-388A1-01), and country specific AC Line Cord (e.g. 23844-00-00R); **Sold Separately**



Rugged Frames, D-Clips & Tethers

8 in. & 10 in. Rugged Frames



SG-ET5X-8RCSE2-02

8 in. Rugged Frame with Rugged I/O connector (Included)



SG-ET5X-10RCSE2-01

10 in. Rugged Frame with Rugged I/O connector (Included)

- Improves drop protection to 6 ft (2m) to concrete
- Sealed I/O connector replaces bottom dust cover
- Screw bosses on back to attach hand and shoulder straps
- Works with or without Expansion Backs

D-Clips & Tethers



SG-ET5X-DCLIP2-02

2 D-Clips attach to screw bosses in rugged frame



SG-TC7X-STYLUS-03

TC7X 3-Pack STYLUS + TETHER

- TC7X passive stylus (no batteries needed, more durable)
- 3-Pack + Tether (single stylus unit is not available)
- **Note:** stylus will not work in areas where water is pooled on the screen



SG-ET5X-SLTETR-01

Stylus coil tether

- Coiled tether provides a convenient method to keep your tablet and pen together without compromising your usage experience

Operations Cases, Straps, and Headsets

8 in. & 10 in. Operations Case



FRONT VIEW

SG-ET5X-8HLST-01
8 in. Operations Case



BACK VIEW

SG-ET5X-10HLST-01
10 in. Operations Case

- Supports tablet **without** rugged frame or integrated scanner
- Made of a leather with a pen loop for stylus
- D-Clip points in 4 corners support addition of:
 - Hand strap (sold separately)
 - Shoulder strap (sold separately)
- Mounting points accommodate additional accessories
- Works with or without Expansion Backs

NEW: USB-C Headset



HDST-USBC-PTT1-01

- One-piece solution wired USB-C headset mono with microphone
- For Push-To-Talk (PTT) applications with volume up/volume down/PTT buttons (Compatible with PTT Express/Pro)
- Connects to USB-C port on TC21/TC26, ET5x, EC5x, TC53/TC58
- Rotating earpiece allows for right or left ear configuration
- Includes clip for attaching PTT button to clothing

Operations Cases & Straps

Hand Strap



SG-ET5X-HNDSTP-01
Handle strap

- Hand straps attach to rugged frame via D-Clips
- Hand strap has plastic grips for carrying comfort
- Handles can **not** be added to tablets with integrated scanners

Shoulder Straps



SG-ET5X-SHDRSTP-01
Break away Shoulder Strap

- Shoulder straps attach to rugged frame via D-Clips
- Break away shoulder strap releases from tablet to prevent damage when snagged
- Straps can **not** be added to tablets with integrated scanners

Expansion Backs with Built-in Scanner & Rotating Hand Strap

SE4770 for Windows or Android OS



ZBK-ET5X-8SCN5-01 (Windows, 8 in.)
ZBK-ET5X-8SCN7-02 (Android, 8 in.)

ZBK-ET5X-10SCN5-01 (Windows, 10 in.)
ZBK-ET5X-10SCN7-02 (Android, 10 in.)

- Rotating Hand Strap base with built-in Scanner
- Expansion back screws to back of tablet; replacing battery door
- Captures 1-D and 2-D bar codes in virtually any conditions, at lightning speed via Laser aimer
- **Note:** Optional Auxiliary PowerPack (**BTRY-ET5X-PRPK2-01**; ***sold separately***) can be inserted in base

SE4710 for Windows OS ***Only***



ZBK-ET5X-8SCN1-01 (8 in.)

ZBK-ET5X-10SCN1-01 (10 in.)

- Rotating Hand Strap base with built-in Scanner
- Expansion back screws to back of tablet; replacing battery door
- Captures 1-D and 2-D bar codes via LED aimer (Indoor use)
- **Note:** Optional Auxiliary PowerPack (**BTRY-ET5X-PRPK2-01**; ***sold separately***) can be inserted in base

Expansion Back (No Scanner) & Auxiliary PowerPack

Expansion Back (No Scanner)



ZBK-ET5X-8RH1-01 (8 in.)

ZBK-ET5X-10RH1-01 (10 in.)

- Expansion back screws to back of tablet; replacing battery door
- Rotating Hand Strap base
- **Note:** Optional Auxiliary PowerPack (**BTRY-ET5X-PRPK2-01**; ***sold separately***) can be inserted in base

Auxiliary PowerPack Battery



BTRY-ET5X-PRPK2-01

24.5Wh of additional charging capacity (3400mAh @ 7.2V)

- Hot swappable; enables 24x7 usage
- Used in addition to the main battery capacity
- Charges with 4-slot battery charger (**SAC-ET5X-4PPK1-01**)
- Charges when tablet & Expansion Back are in 1-slot Dock or ShareCradle
- Gas Gauge LED to display the amount of charge
- **Note:** Designed for use with **any** Expansion Back

ET51 & ET56 Internal Batteries

Internal Batteries for *Android OS*



BTRY-ET5X-8IN5-01
8 in. Tablet Internal Battery

- 6440mAh / 3.8V / 24.4Wh
- Rechargeable Li-Polymer; User replaceable
- 5-6 hours continuous WLAN usage with display on



BTRY-ET5X-10IN5-01
10 in. Tablet Internal Battery

- 9660mAh / 3.85V / 37.1Wh
 - Rechargeable Li-Polymer; User replaceable
 - 8-9 hrs continuous WLAN usage with display on
- **Note:** ET50 / ET55 internal batteries are **NOT COMPATIBLE** with the new ET51 / ET56 Tablets (and vice versa)

Internal Batteries for *Windows OS*



BTRY-ET5X-8IN3-01
8 in. Tablet Internal Battery

- 3300mAh / 7.6V / 25.1Wh
- Rechargeable Li-Polymer; User replaceable
- 5-6 hours continuous WLAN usage with display on



BTRY-ET5X-10IN3-01
10 in. Tablet Internal Battery

- 4950mAh / 7.7V / 38.1Wh
 - Rechargeable Li-Polymer; User replaceable
 - 8-9 hrs continuous WLAN usage with display on
- **Note:** ET50 / ET55 internal batteries are **NOT COMPATIBLE** with the new ET51 / ET56 Tablets (and vice versa)

ET51 & ET56 Replacement Battery Doors

8 in. Replacement Battery Doors



KT-ET5X-8BTDR2-01
ET51/ET56 8" Battery Door

- Standard replacement, push-on battery door



KT-ET5X-8BTDRSA1-01
ET51/ET56 8" Battery Cover Attached with Screws (Included)

- Door attaches with included set of screws
- Recommended for high vibration environments
- **Note:** ET50 / ET55 batter doors are **NOT COMPATIBLE** with the new ET51 / ET56 Tablets (and vice versa)

10 in. Replacement Battery Doors



KT-ET5X-10BTDR2-01
ET51/ET56 10" Battery Door

- Standard replacement, push-on battery door

- **Note:** ET50 / ET55 internal batteries are **NOT COMPATIBLE** with the new ET51 / ET56 Tablets (and vice versa)

ET51 Integrated Scanner Tablets

ET51 8.4" Devices with Integrated SE4710 Scanner & Triggers

ET51 8 in. Integrated Scanner (Android)



ET51CE-G21E-SFA6 (RoW; 4GB RAM / 32GB Flash)
ET51CE-G21E-SFNA (NA; 4GB RAM / 32GB Flash)

- ET51CE-G21E-00xx Base Android 8.x Tablet

ET51 8 in. Integrated Scanner (Windows)



ET51AE-W12E-SF (4GB RAM / 64GB Flash)
ET51AE-W15E-SF (8GB RAM / 128GB Flash)

- ET51AE-W1xE Base Windows 10 IoT Tablet

Common Features

- Compact and fully integrated data-centric tablet solution
- Ready out of the box for immediate implementation; No assembly needed
- SE4710 standard range 1D / 2D scan engine
- Red aiming illumination for faster / more accurate performance
- Protective frame houses the scan engine and two triggers
- Increases drop spec to 4 ft (1.2m) to concrete / 5 ft (1.5m) to plywood
- Adjustable pre-installed hand strap fits on either side or back of device
- Ambidextrous scanning triggers (left and right)
- Rugged I/O and Charging Connector included
- **Note:** Optional Auxiliary PowerPack (**BTRY-ET5X-PRPK2-01; sold separately**) can be inserted in optional Expansion Back

Integrated Scanner Hand Strap

Hand Strap



SG-ET5X-SFSTRAP1-01
ET5x Integrated Scanner Hand Strap
Including Side and Back Mounting Screws

- This is a replacement, spare or additional hand strap that is used on ET51 Integrated Scanner devices
- Only compatible with ET51 Integrated Scanner tablets
- Hand strap can be installed in a variety of locations on the tablet
 - left side of tablet
 - right side of tablet
 - right back side of tablet
 - left back side of tablet
- Strap includes washers and five screws with two different lengths
- Different length screws are used depending on attachment point on tablet
- Only two of the five screws are needed

ET51 with Integrated Scanner Accessories

Only a subset of ET51 8 in. Accessories are *compatible* with these devices



Part Number	Description
CRD-ET5X-SE4CO3-01	4-Slot Charge Only ShareCradle for ALL ET5X Tablets (with or without Integrated Scanner)
SAC-ET5X-4PPK1-01	4 -Slot Bty Chgr For Optional Bty Pwr Pack, Can Be Docked And Powered In The 5-Slot Crd Via Adpt Cup (Sold Separately) Or Used Standalone
CRD-ET5X-1SCG2	1-Slot Charge Only Cradle; Requires Power Supply PWR-BGA12V50W0WW, DC Cable CBL-DC-388A1-01 And 3 Wire Country Specific AC Line Cord Sold Separately
CRD-ET5X-1SCOM2R	1-Slot Dock With Rugged IO Adapter: HDMI, Ethernet, 3xUSB 3.0; Requires Power Supply PWR-BGA12V50W0WW, DC Cable CBL-DC-388A1-01 And 3 Wire Country Specific AC Line Cord Sold Separately
PWR-WUA5V12W0xx	Power Supply VAC, 5 V, 2.5 A with Country Specific Plug (See page 9)
CBL-TC2X-USBC-01	TC2x USB-C Cable
SG-TC7X-STYLUS-03	TC7x 3-Pk Stylus + Tether
SG-ET5X-SLTETR-01	ET5x Stylus Coil Tether
ZBK-ET5X-8RH1-01	8" Expansion Back Accessory + Rotating Handstrap (Optional Battery Sold Separately)
BTRY-ET5X-PRPK2-01	ET5x Optional Powerpack Battery (Second Battery) For 8 in. and 10 in. Expansion Backs
BTRY-ET5X-8IN5-01	Battery Pack, Lithium Polymer, 6440 mAHr / 3.8 V / 24.4 Whr, ET51 Or ET56 8" Android Only, Replacement Internal Battery
BTRY-ET5X-8IN3-01	Battery Pack, Lithium Polymer, 3300 mAHr / 7.6V, ET51 Or ET56 8" Windows Only, Replacement Internal Battery

ET51 with Integrated Scanner Accessories

Likewise, a subset of ET51 8 in. Accessories are IN-compatible



Part Number	Description
CRD-ET5X-SE4CO2-01	4-Slot ET5x Charge Only Sharecradle
CRD-ET5X-1SCOM1	ET5X 1-Slot Charge and Communication Dock
CHG-ET5X-CBL2-01	Rugged Charge Connector (Charge dongle)
SG-ET5X-8RCSE2-02	8 in. Rugged Frame with Rugged I/O Connector (Included)
SG-ET5X-DCLIP2-02	2 D-Clips attach to Screw Bosses in Rugged Frame
SG-ET5X-8HLST-01	8 in. Operations Case
SG-ET5X-SHDRSTP-01	Break away Shoulder Strap (MOVE TO OTHER TABLE WHEN DCLIPS ARE AVAILABLE)
SG-ET5X-HNDSTP-01	Handle strap
ZBK-ET5X-8SCN5-01	Windows 8 in. SE4750 Expansion Back Accy + Rotating Hand Strap (Optional Battery Sold Separately)
ZBK-ET5X-8SCN5-02	Android 8 in. SE4750 Expansion Back Accy + Rotating Hand Strap (Optional Battery Sold Separately)
ZBK-ET5X-8SCN1-01	Windows 8 in. SE4710 Expansion Back Accy + Rotating Hand Strap (Optional Battery Sold Separately)

ET51 & ET56 Third Party Offerings

The products on the following slides are designed, sold and serviced by parties outside Zebra Technologies.

They are offered through the third parties and their reseller networks and are not in Zebra's parts catalog.

*Zebra does **not** sell, support, nor formally test these products.*



[Gamber-Johnson / Zebra ET5x Tablet Docks & Cradles Web Page](#)

Gamber-Johnson Rugged Mounting Docks & Cradles

Keep Your Tablet Safe with Gamber-Johnson Dock or Cradle

- Designed by Gamber-Johnson to support rugged mounting needs; such as, forklifts, emergency vehicles, etc.
- Docking stations replicate tablet ports: USB, Ethernet, RF, and power. Ideal for connecting printers or other peripherals
- Cradles keep your tablet safe but do not replicate any ports. Use these to mount tablets without any peripherals
- Key lockable, VESA 75mm mounting pattern, and clamps to secure the tablet
- Only work with tablets equipped with rugged frame
- Compatible with accessories like expansion backs with scanners and optional power pack battery
- Keyboard mount offered to support iKey keyboards



3rd party designed, sold and serviced. Zebra does *not* sell, *nor* formally test.



[ProClip / Zebra ET5x Tablet Holders Web Page](#)

ProClip Mounting Cradles

ProClip Precision Manufactured Mounting & Charging Solutions

- Custom designed by ProClip and offered through ProClip / Brodit channels and their reseller network
- Solutions to secure, power, and charge your Zebra mobile device.
- Ideal for delivery vehicle dashboard, warehouse picker, forklift cage, hospital mobile cart, retail counter applications
- Keep your Zebra device within reach and ready to go to work
- Key lock option supported
- Rugged frame and non-rugged frame tablets options are available
- Vehicle mounts for ET51 with Integrated Scanner



For Europe contact Brodit AB
Sweden, www.brodit.se



*Kiosk/Wall Sleeve
with Key Lock*

**3rd party designed, sold and serviced. Zebra does *not* sell,
nor formally test.**



ARMORACTIVE.

[ArmorActive / Zebra ET5x Tablet Mobility Web Page](#)

ArmorActive Payment & Mobility Solutions

ArmorActive Mobility and Deployment Solutions Worldwide

- RapidDoc & Kiosk Options
 - Multiple quick and easy tablet release options: RFID (included)
 - Software undock (PIN), Username / password, Biometrics, NFC
 - Universal base for connectivity with ET5x tablets (Windows or Android)
 - Easily fits into work environment, 6 USB Ports and wired Ethernet.
- Payment and Card Reader Options
 - Quick Release Latching Cradles for payment terminal support; includes Verifone e355 and Ingenico iSMP4 EMV readers
 - Sleek and durable Expansion Back for Magnetic Strip (MSR) and Smart Card (SRC) readers
 - Payment Peripheral Integration Options
 - Direct hardwired integration with up to 2 payment peripherals in the ArmorActive Enclosure



3rd party designed, sold and serviced. Zebra does *not* sell, *nor* formally test.

ET51 & ET56 DOCKING STATIONS

DS-ZEB-100 SERIES / DS-ZEB-200 SERIES

- Standard & Advanced I/O options
- Internal power supply
- LED power indicator
- Spring-loaded docking connector
- Pivoting alignment points
- VESA 75 mounting pattern

**UNIVERSAL CRADLE FOR 11"-14" COMPUTING
DEVICES**

UT-1001

- Ultra-rugged, weighing 3.72 lbs
- High value non-electronic computing solution
- Customizable to fit your mobile office requirements
- High performance injection molded materials
- Durable powder coat painted top plate
- Ultra-thin & low profile maximizes space and visibility
- Increased vertical and horizontal adjustability

LOW PROFILE DOCKING STATION

367-4682-R

- Available for 8" & 10" ET5X tablets, with or without rugged case
- Features 300 degree rotation, 100 degree tilt
- Includes quick release & locking functionality
- Ensures device is always charged & ready to go mobile
- Versatile & durable

DS-ZEB-100 SERIES**DS-ZEB-200 SERIES**



[InVue / Zebra ET5x Products Web Page](#)

InVue Security & Payment Docks

InVue Retail Security and Payment Docking Options

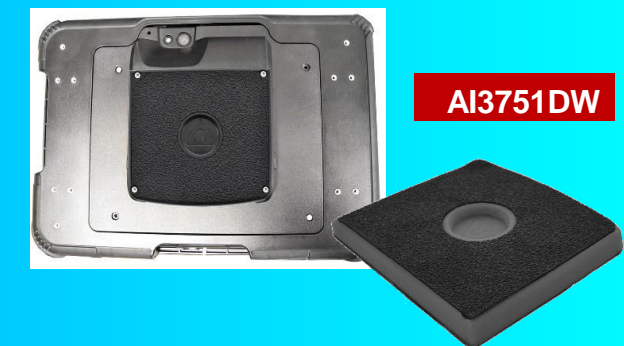
- Retail Security components increase sales, decrease theft, and improve profitability
- Flexible dock features 3-axis viewing, optional mobile POS device integration, and USB 2.0 ports
- Fixed dock for tablet display solution with a point-of-sale option; durable, versatile and tamper resistant
- Useful in any environment and features multiple stand options for counter display, wall mounted and pedestal.
- Create custom solutions that are customer-centric to ensure an ideal experience for retail viewing and mPOS



3rd party designed, sold and serviced. Zebra does *not* sell, *nor* formally test.

Case Solutions for Zebra's ET51/ET56 Tablets

- Designs solutions for mobile customers that need their device on or around them and easily accessible.
 - Holster for 8.4" ET51/56 with Handle
 - Holster for 8.4" ET51/56 with Rugged Frame
 - OP Case for 8.4" ET51/56 & ISMP4 with Hand Strap
 - Holster for 10.1" ET51/56 without Rugged Frame
 - Holster for 10.1" ET51/56 with Expansion Back
 - Magnetic Mount Plate for ET51/56 8.4" Tablet





ZEBRA and the stylized Zebra head are trademarks of Zebra Technologies Corp., registered in many jurisdictions worldwide. All other trademarks are the property of their respective owners. ©2020 Zebra Technologies Corp. and/or its affiliates. All rights reserved.